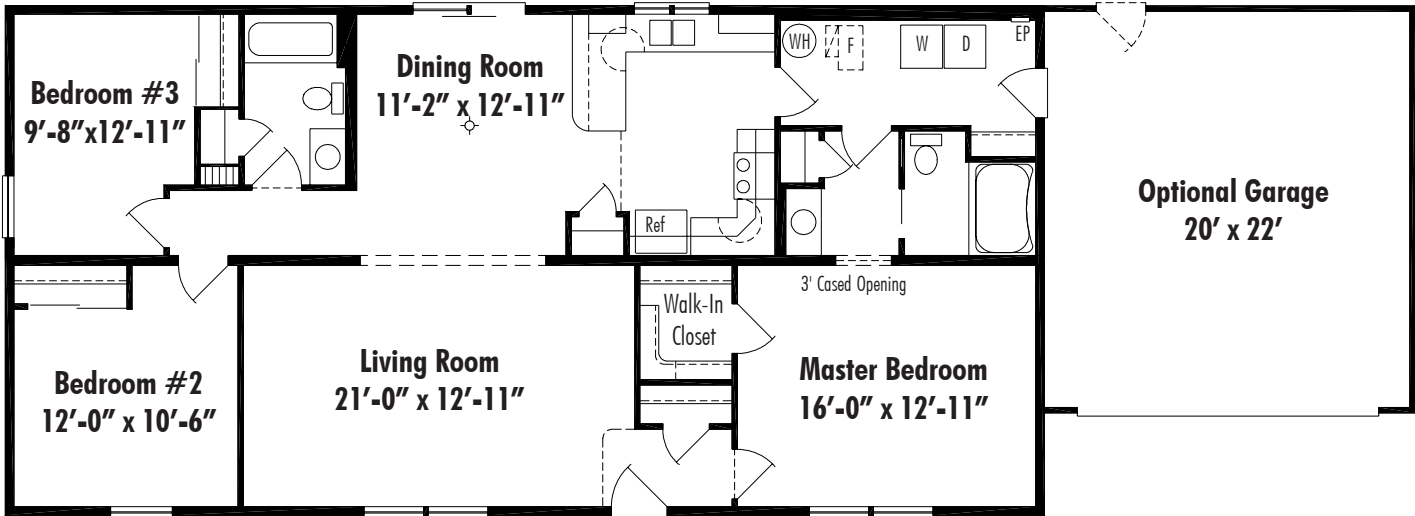


The Belmont

Challenger Series



Shown with optional porch and garage.



Belmont Crawl Space 27'-4" x 56', 1541 Sq. Ft. Living Area



©2009 Unibilt Industries, Inc.
All Right Reserved

Unibilt® Homes

Dream...Design...Build

www.unibilthomes.com

Challenger Series House

Standard Features

FLOOR SYSTEM

2 x 10 Floor Joists, 16" on Center
¾" OSB Tongue & Groove Subfloor

EXTERIOR WALLS

2 x 6 Exterior Walls, 16" on Center

EXTERIOR

3/8" OSB Sub-Siding on Full Perimeter on each Module
Including Center Marriage Wall
House Wrap
Low Maintenance Vinyl Siding
Low Maintenance Vinyl Soffit Overhangs
Low Maintenance Vinyl Shutters per Plan
Masonite Steel Insulated 6 Panel Exterior Doors
*Some Plans include Single or Double Sidelight
Silver Line Vinyl Single Hung Windows with Screen
Silver Line Premium Patio Door
Aluminum Continuous Gutters and Downspouts

ROOF

6/12 Pitch Roof Truss System, 24" on Center
7/16" OSB Roof Sheathing
15# Felt Paper Underlayment
Seal-Down Fiberglass Asphalt Roof Shingles (30 Year)
11" Eaves Overhang and 9" Gable Overhang

INSULATION

R-38 Ceiling Insulation - 12" Fiberglass batt
R-19 Insulation in Exterior Walls - 6" Fiberglass batt

INTERIOR

8' Ceilings
2 X 4 Interior Walls, 24" on Center
2 X 3 Center Marriage Wall, 16" on Center, Each Side
½" Finished Drywall with Smooth Finish on Walls,
Smooth Finish or Textured on Ceilings
All Interior Drywall Surfaces Primed with White Latex Paint
Painted 6 panel Molded Wood Fiber Interior Doors
Painted FJ Pine Interior Trim – 2 ¼" Casing & 3" Base
Ventilated Shelving in Closets

FLOOR COVERINGS

25oz Carpeting with 7/16" Pad in Living Room, Dining
Room, Bedrooms and Halls
Vinyl Flooring in Kitchen, Baths, Utility Room, & Entry Foyer

KITCHEN FEATURES

Homestead Oak Kitchen Cabinets
Laminate Counter Top
8" Deep Double Bowl Stainless Steel Sink
Delta Chrome Single Lever Faucet with Spray
Range Hood

BATHROOM FEATURES

Homestead Oak Bathroom Vanities
Laminate Vanity Top with White Ceramic Bowl
Oak Medicine Cabinet or Mirror (per plan)
White Fiberglass Tub/Shower Unit
Delta Chrome Single Lever Lavatory Faucet

HEATING

Hot Forced Air Electric Furnace with Heat Pump (Central Air)
Toe Kick or Wall Registers in Kitchen, Baths, and Utility Room

PLUMBING

Plumb-Pex Water Line System
PVC Waste Lines
Plumbing Hook-ups for Washer in Utility Room
Frost Proof outside Hose Bibs (2)
50 Gallon Electric Water Heater
Plumbing and Vent Connections of Modular Units

ELECTRIC

All Electrical Work in Accordance with National
Electric Codes
200 AMP Electric Panel located per plan
200 AMP Meter Base Mounted for Underground Service
Smoke Alarms in each Bedroom
Door Chimes – Wireless
Interior and Exterior Lighting Fixtures
Bedroom Ceiling Lights
Paddle Fan Prep in Dining Room and Bedrooms
Recess Can Lights in Kitchen
Fan/Light Combination in all Baths
Exterior Weatherproof Electric Outlets in Front and Rear
220 Volt Outlet for Dryer in Utility Room
Two Wired Phone Boxes only