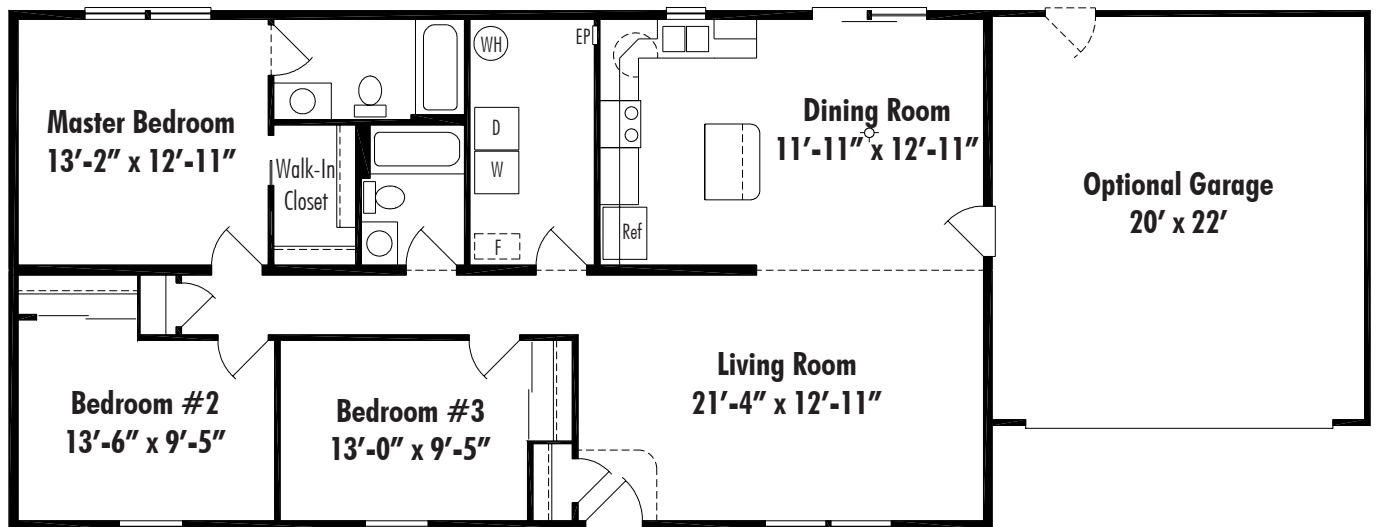


# The Jackson

Challenger Series



Shown with optional porch and garage.



**Jackson** Crawl Space 27'-4" x 52', 1431 Sq. Ft. Living Area



©2009 Unibilt Industries, Inc.  
All Right Reserved

**Unibilt<sup>®</sup> Homes**

**Dream...Design...Build**

[www.unibilthomes.com](http://www.unibilthomes.com)

# Challenger Series House

## Standard Features

### FLOOR SYSTEM

2 x 10 Floor Joists, 16" on Center  
¾" OSB Tongue & Groove Subfloor

### EXTERIOR WALLS

2 x 6 Exterior Walls, 16" on Center

### EXTERIOR

3/8" OSB Sub-Siding on Full Perimeter on each Module  
Including Center Marriage Wall  
House Wrap  
Low Maintenance Vinyl Siding  
Low Maintenance Vinyl Soffit Overhangs  
Low Maintenance Vinyl Shutters per Plan  
Masonite Steel Insulated 6 Panel Exterior Doors  
\*Some Plans include Single or Double Sidelight  
Silver Line Vinyl Single Hung Windows with Screen  
Silver Line Premium Patio Door  
Aluminum Continuous Gutters and Downspouts

### ROOF

6/12 Pitch Roof Truss System, 24" on Center  
7/16" OSB Roof Sheathing  
15# Felt Paper Underlayment  
Seal-Down Fiberglass Asphalt Roof Shingles (30 Year)  
11" Eaves Overhang and 9" Gable Overhang

### INSULATION

R-38 Ceiling Insulation - 12" Fiberglass batt  
R-19 Insulation in Exterior Walls - 6" Fiberglass batt

### INTERIOR

8' Ceilings  
2 X 4 Interior Walls, 24" on Center  
2 X 3 Center Marriage Wall, 16" on Center, Each Side  
½" Finished Drywall with Smooth Finish on Walls,  
Smooth Finish or Textured on Ceilings  
All Interior Drywall Surfaces Primed with White Latex Paint  
Painted 6 panel Molded Wood Fiber Interior Doors  
Painted FJ Pine Interior Trim – 2 ¼" Casing & 3" Base  
Ventilated Shelving in Closets

### FLOOR COVERINGS

25oz Carpeting with 7/16" Pad in Living Room, Dining  
Room, Bedrooms and Halls  
Vinyl Flooring in Kitchen, Baths, Utility Room, & Entry Foyer

### KITCHEN FEATURES

Homestead Oak Kitchen Cabinets  
Laminate Counter Top  
8" Deep Double Bowl Stainless Steel Sink  
Delta Chrome Single Lever Faucet with Spray  
Range Hood

### BATHROOM FEATURES

Homestead Oak Bathroom Vanities  
Laminate Vanity Top with White Ceramic Bowl  
Oak Medicine Cabinet or Mirror (per plan)  
White Fiberglass Tub/Shower Unit  
Delta Chrome Single Lever Lavatory Faucet

### HEATING

Hot Forced Air Electric Furnace with Heat Pump (Central Air)  
Toe Kick or Wall Registers in Kitchen, Baths, and Utility Room

### PLUMBING

Plumb-Pex Water Line System  
PVC Waste Lines  
Plumbing Hook-ups for Washer in Utility Room  
Frost Proof outside Hose Bibs (2)  
50 Gallon Electric Water Heater  
Plumbing and Vent Connections of Modular Units

### ELECTRIC

All Electrical Work in Accordance with National  
Electric Codes  
200 AMP Electric Panel located per plan  
200 AMP Meter Base Mounted for Underground Service  
Smoke Alarms in each Bedroom  
Door Chimes – Wireless  
Interior and Exterior Lighting Fixtures  
Bedroom Ceiling Lights  
Paddle Fan Prep in Dining Room and Bedrooms  
Recess Can Lights in Kitchen  
Fan/Light Combination in all Baths  
Exterior Weatherproof Electric Outlets in Front and Rear  
220 Volt Outlet for Dryer in Utility Room  
Two Wired Phone Boxes only