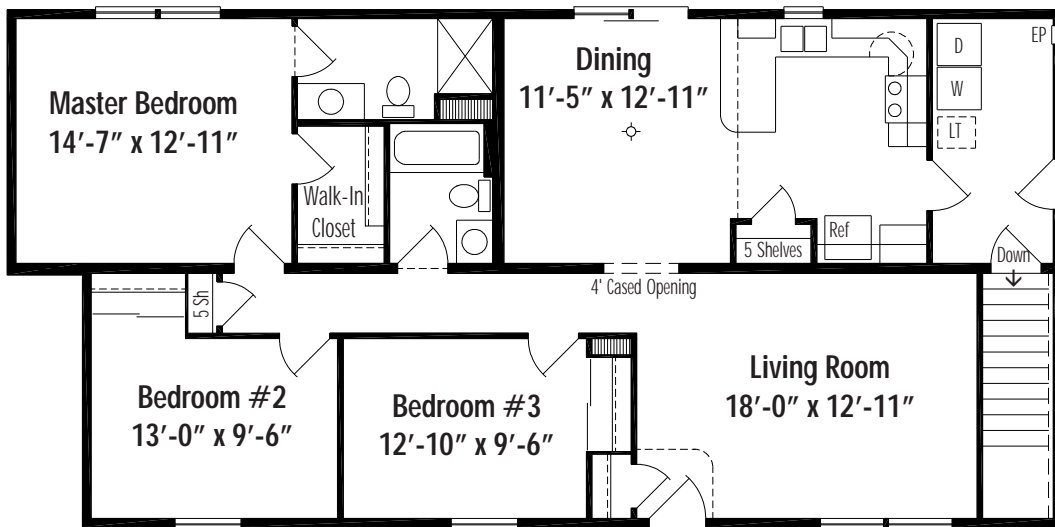
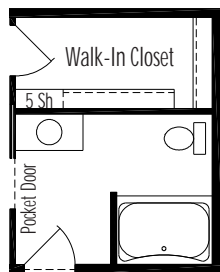


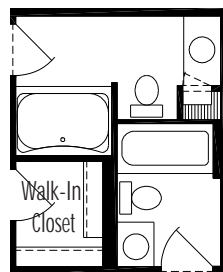
Bainbridge D • Traditional Ranch



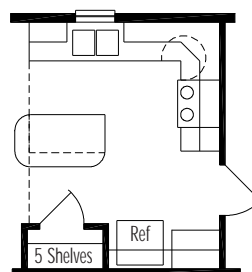
Bainbridge D Basement 27'-4" x 52/56' 1476 Sq. Ft. Living Area



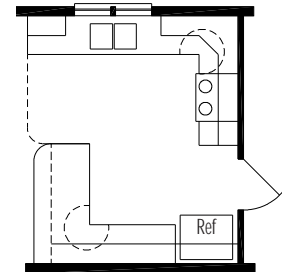
Hall Bath Option BBB1
Garden Tub



Master Bath Option BBB2
Garden Tub



Kitchen Option B
Island Kitchen



Kitchen Option D
Deluxe Kitchen

Floor plan dimensions are approximate. Artist's floorplans, elevation renderings and photographs are for illustration purposes only and may include optional features. Garages, porches and other attachments are not included unless specified in the written contract. All construction details and specifications must be written in the contract. No oral conditions.