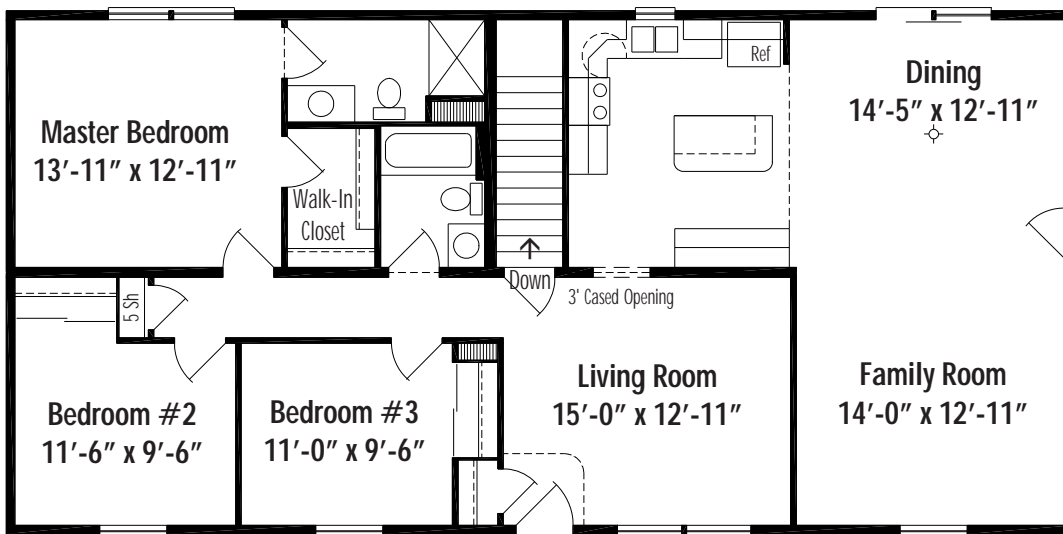
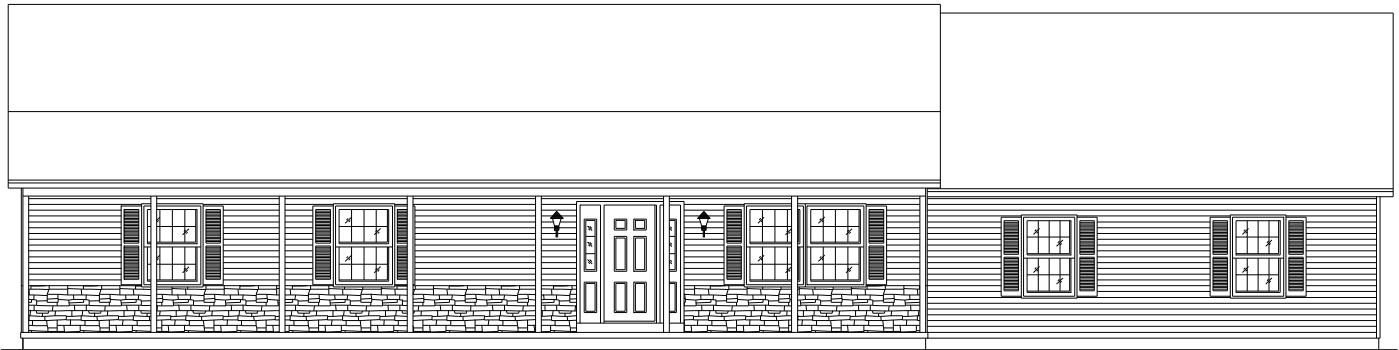
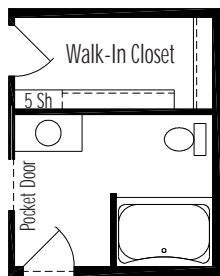


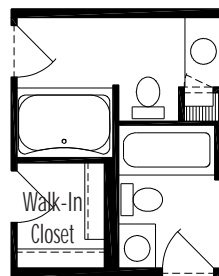
Cedarville B • Traditional Ranch



Cedarville B Basement 27'-4" x 56', 1531 Sq. Ft. Living Area



Hall Bath Option
CVB1 Garden Tub



Master Bath Option
CVB2 Garden Tub

Floor plan dimensions are approximate. Artist's floorplans, elevation renderings and photographs are for illustration purposes only and may include optional features. Garages, porches and other attachments are not included unless specified in the written contract. All construction details and specifications must be written in the contract. No oral conditions.