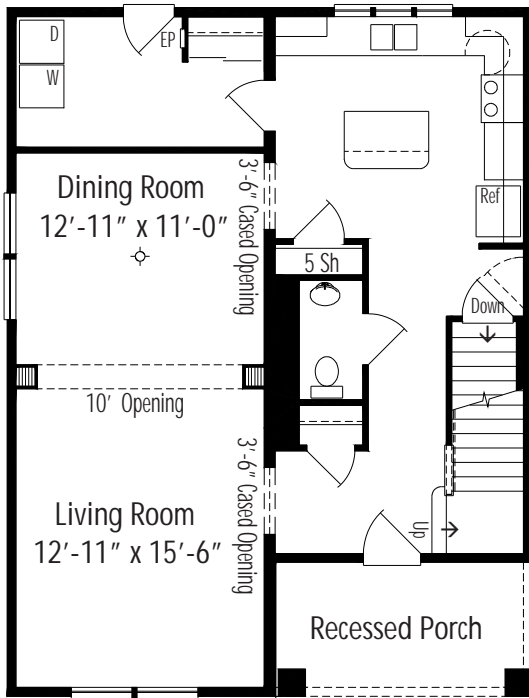
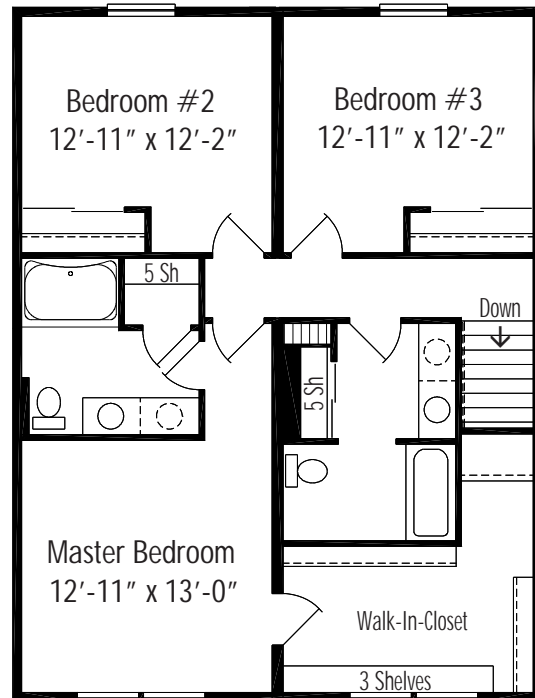


Georgetown B • Traditional 2 Story



Georgetown B Basement
27'-4" x 29'36", Total Living Area 1839 Sq. Ft.



Georgetown Second Floor

Floor plan dimensions are approximate. Artist's floorplans, elevation renderings and photographs are for illustration purposes only and may include optional features. Garages, porches and other attachments are not included unless specified in the written contract. All construction details and specifications must be written in the contract. No oral conditions.