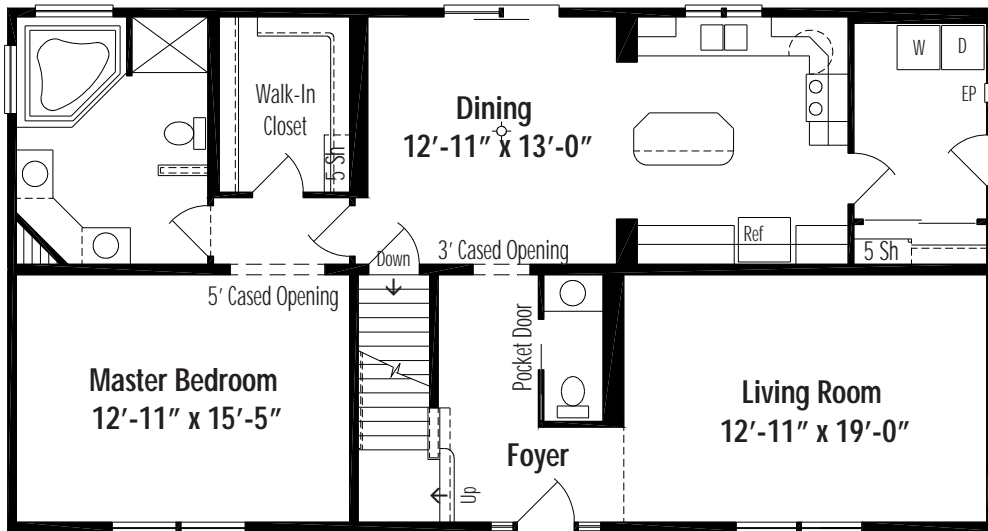


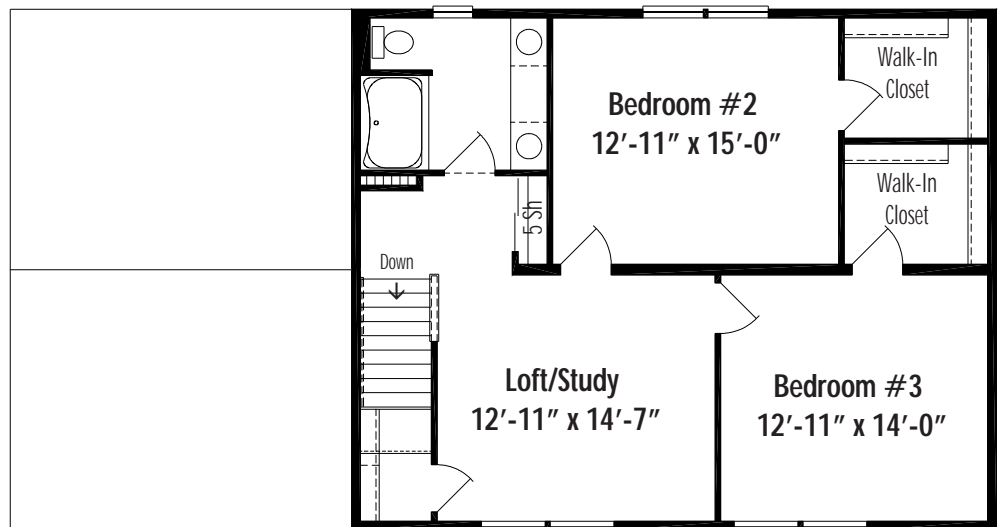
Monticello III F • Traditional 2 Story



Monticello III F Basement 27'-4" x 52', Total Living Area 2325 Sq. Ft.

Floor plan dimensions are approximate. Artist's floorplans, elevation renderings and photographs are for illustration purposes only and may include optional features. Garages, porches and other attachments are not included unless specified in the written contract. All construction details and specifications must be written in the contract. No oral conditions.

©2005 Unibilt Industries, Inc.
All Right Reserved



Monticello III 27'-4" x 34' Second Floor Study Option